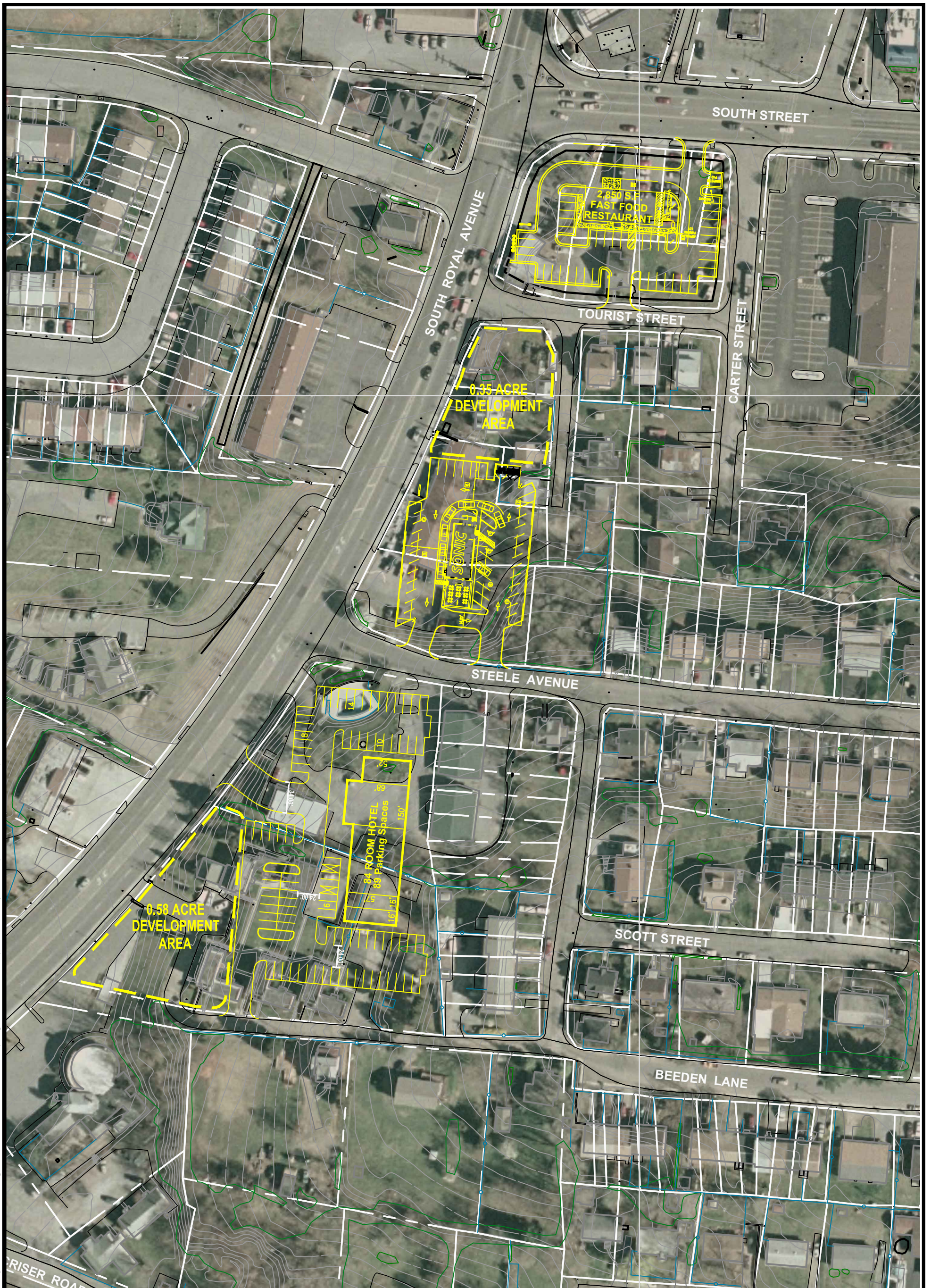


P:\GWCA\Front Royal\Royal Ave Redev Plan.dwg, 6/14/2013 8:32:27 AM, Jspringer, DWG To PDF.pc3, ANSI expand B (11.00 x 17.00 inches), 1:1



Prepared by:



Pennoni Associates Inc.
 117 East Piccadilly Street, Suite 200
 Winchester, Virginia 22601
 Tel: 540-667-2139 Fax: 540-665-0493

SOUTH ROYAL AVENUE REDEVELOPMENT PLAN

FRONT ROYAL, VIRGINIA

DATE: JUNE 14, 2013 SCALE: 1"=100 FT.